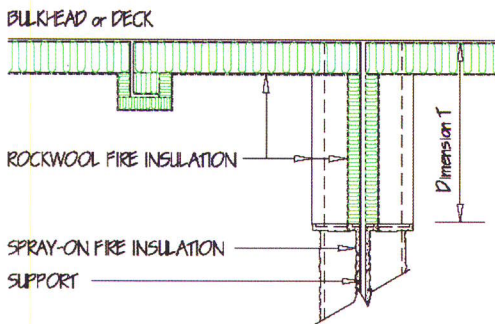


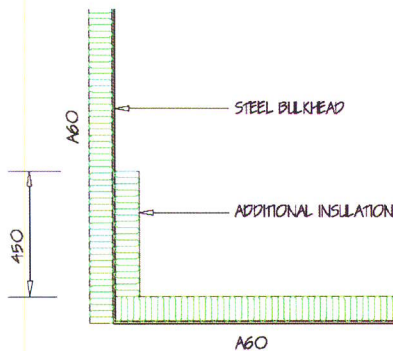
A/H Rated Bulkhead or Deck



Support

- **Heat Bridge:**
The potential heat bridge is through the connection between the support and the steel bulkhead or deck.
- **Solutions:**
 - A-rated bulkhead/deck: "T" = 450 mm
 - H-rated bulkhead/deck: "T" = 600 mm

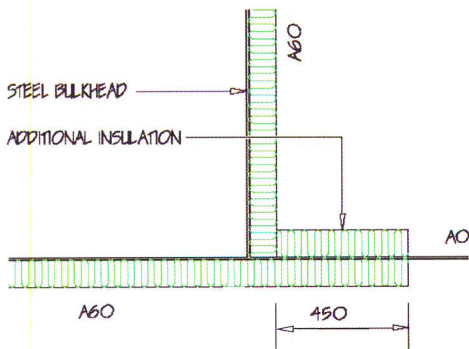
A60 Corner Detail



Insulation Either Side of Bulkhead

- **Heat Bridge:**
The potential heat bridge is through the bulkhead connection.
- **Solutions:**
An additional band of A60 insulation must be fixed over the steel along the joint.

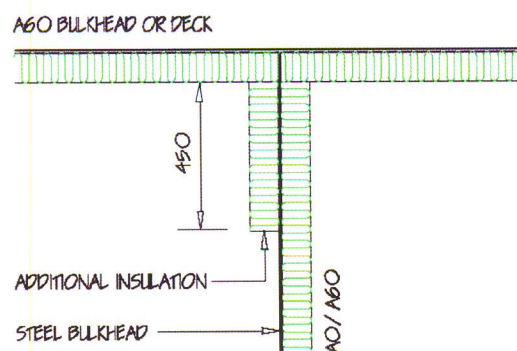
A60 Junction Detail



Insulation on Outside of Bulkhead

- **Heat Bridge:**
The potential heat bridge is through the bulkhead connection.
- **Solutions:**
If insulation can not be placed within the corner angle, additional bands of A60 insulation must be fixed on either side of the steel at the joint.

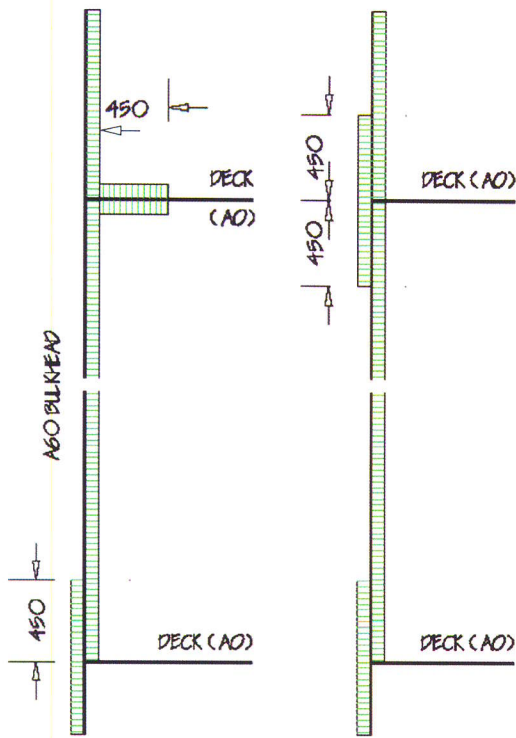
A60 Junction Detail



Insulation on Inside of Bulkhead

- **Heat Bridge:**
The potential heat bridge is through the bulkhead connection.
- **Solutions:**
If external insulation can not be used, an additional band of A60 insulation must be fixed on the inside steel along the joint.

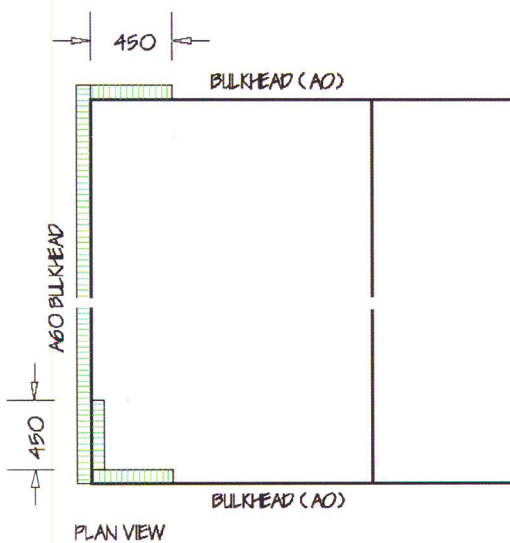
A60 Bulkhead



Vertical Section with A0 Decks

- **Heat Bridge:**
The potential heat bridge is through the bulkhead at the connection with the Deck.
- **Solutions:**
 - **Alternative 1:**
The top solution is only suitable where the deck can be easily insulated on the top. The bottom solution requires the insulation to be installed on both sides of the bulkhead.
 - **Alternative 2:**
Where it is impossible to insulate on top of the deck, insulation should be installed on the opposite side of the bulkhead as shown.

A60 Bulkheads



Plan View with A0 Bulkheads

- **Heat Bridge:**
The potential heat bridge is through the bulkhead at the connection with the A0-rated bulkheads.
- **Solutions:**
 - **Alternative 1:**
The top solution is the easiest way to avoid the heat bridge
 - **Alternative 2:**
Where it is impossible to insulate the outer surface, the inner surface may be insulated as shown

A60 Bulkhead

Vertical Section with A0 Decks

- **Heat Bridge:**

The potential heat bridge is through the bulkhead at the connection with the Deck.

- **Solutions:**

The insulation at each dock connection must overlap the bulkhead by a minimum of 450 mm.

