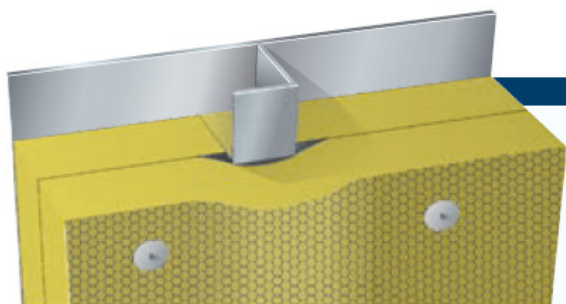


A-60 Steel Bulkhead



MED B-4188

Product: Rockwool Marine Wired Mat 90

Density: 90 kg/m³

Thickness: Plate 2x45 mm insulation
Stiffener 45 mm insulation

Construction:

- Plate between stiffeners insulated with two layers of 45 mm Rockwool Marine Wired Mat 90
- Stiffeners insulated in the same process with min. 45 mm Rockwool Marine Wired Mat 90.
- Standard steel plate 4.5 mm (\pm 0.5 mm) thick.
- \varnothing 3 mm pins fixed with approx 300 mm distance.
- Insulation secured with washers of \varnothing 38 mm.

Application notes:

- All the connections must be tight, no air gaps.
- Gap under the stiffener must be filled out completely.
- Joints to be staggered, 150 mm overlap is recommended.
- The pins should exceed the insulation by approx 10 mm.
- Wire mesh must be twisted together at joints.
- Insulation can be placed on either side of the steel plate.

Advantages:



Fast installation



Safe solution



Optimal sound properties

Surfaces:

- Reinforced aluminium foil
- Glass cloth

Sound:

- Weighted sound absorption
Marine Wired Mat 90, 2x45 mm $\alpha_w = 0.95$
- Weighted sound reduction of the A60 application $R_w = 58$ dB (with 1 mm steel sheet in front of the insulation)

